



Salisbury House, Eastcote, HA4 9NE
£1,535

A MODERN AND SPACIOUS TWO DOUBLE BEDROOM PROPERTY with gas central heating and located within a couple of minutes walk to Eastcote High Street and Metropolitan/Piccadilly Station. This well proportioned property briefly comprises : Spacious entrance hall, Two good sized bedrooms, good size lounge, fitted kitchen and modern bathroom suite. Salisbury House is ideally situated for Eastcote's amenities including local shops, bus routes, restaurants and the A40 is within striking distance offering swift and easy access to both Central London and the Home Counties.



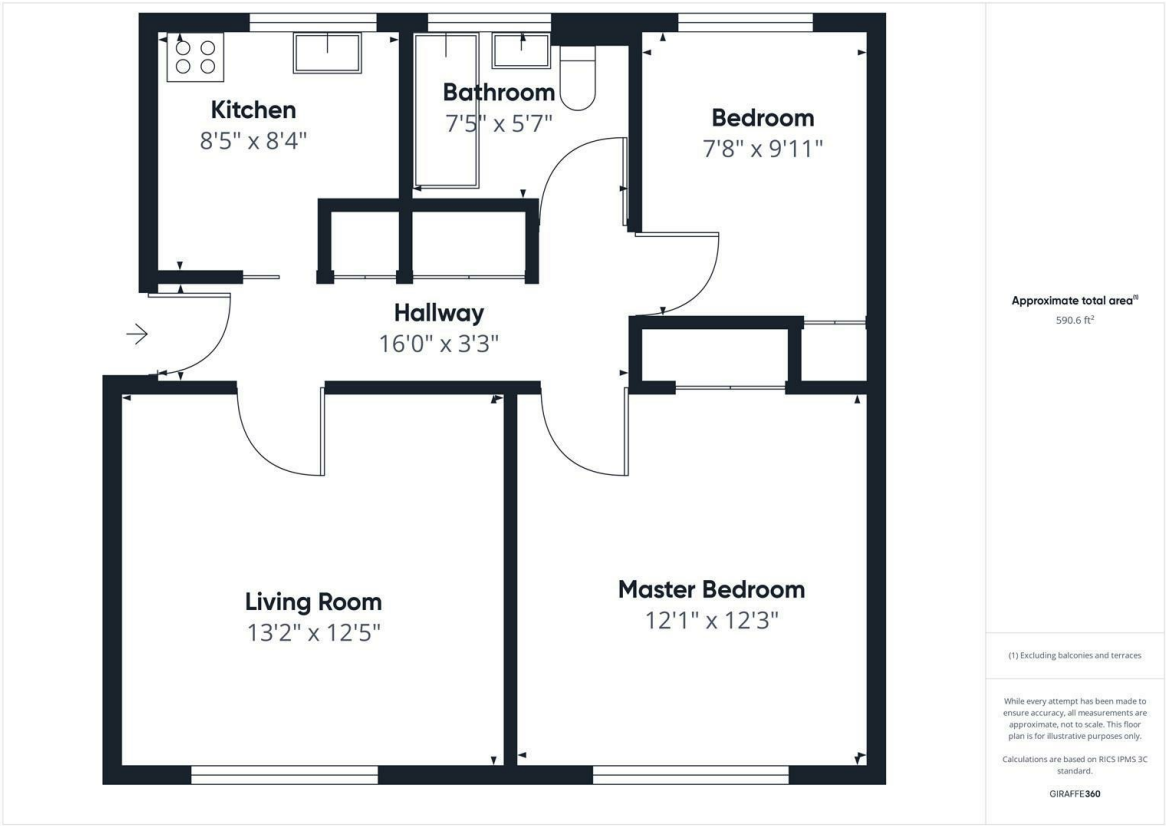


92 High Street, Ruislip, Middlesex, HA4 8LS

T: 01895 625999

lettings@gibsonhoney.co.uk

www.gibsonhoney.co.uk



Energy Efficiency Rating		
	Current	Potential
Very energy efficient - lower running costs		
(92 plus) A		
(81-91) B		
(69-80) C		
(55-68) D		
(39-54) E		
(21-38) F		
(1-20) G		
Not energy efficient - higher running costs		
England & Wales		EU Directive 2002/91/EC



You may download, store and use the material for your own personal use and research. You may not republish, retransmit, redistribute or otherwise make the material available to any party or make the same available on any website. These particulars, whilst believed to be accurate are set out as a general outline only for guidance and do not constitute any part of an offer or contract. Intending purchasers should not rely on them as statements or representation of fact, but must satisfy themselves by inspection or otherwise as to their accuracy. No person in this firms employment has the authority to make or give any representation or warranty in respect of the property.